



# The Quilter's Express November 2025

Official Newsletter of the Shiner Heritage Quilters



**NEXT MEETING: TUESDAY, DECEMBER 2, 2025**

First United Methodist Church Fellowship Hall

**Brief Meeting 5:30 pm — Dinner at 6:00 pm**

## Christmas Dinner Committee

Brenda Fisseler  
Wilma Williams

# 136

Days until the Quilt Show

(as of November meeting)

### On the December Agenda

- Welcome, Pledge of Allegiance, Birthdays, Sunshine & Shadows
- Christmas Dinner
- Christmas Block Drawings
- Mystery Gift Exchange



### What's Next?

#### January

MJ Kinman - Gems & Joy

#### February

Great Big Show & Tell

#### March

Quilt Show Prep

#### April

Louann Fisher - One Block Wonder Quilts

#### May

Swap Meet

**Details inside!**



## MINUTES OF THE OCTOBER 14, 2025 SHINER HERITAGE QUILTERS MEETING

Darcy, substituting for Linda, called the meeting to order at 6:00 p.m.

The Pledge of Allegiance was recited.

There were 41 members and 3 visitors present.

Darcy thanked the hostesses: Margo Henderson, Bennie Gerdes, Rose Mary Havlik, Suzanne Sestak, Janet Zabransky, Theresa Belicek and Carolyn Janak.

Darcy informed the group that Marilyn Schroeder graciously volunteered to take over the scrapbook. A round of applause was given in thanks for her accepting the position.

Annette stated that she will be getting the new members their membership folder and that they may contact Gladys to embroider their nametags.

Darcy introduced Nancy Kagel from My Fabric Friends in Victoria who then gave a very informative talk on the Poppy Block Quilts for the flood victims of Kerrville and the hill country. She stated that volunteers are needed to complete whatever portion of the quilts they would desire to make. They are also looking for donated batting and backing. You may contact Connie Kortz at My Fabric Friends if you have any questions.

**SUNSHINE AND SHADOWS:** Toni shared a Thanksgiving poem and informed us of only 136 days until our quilt show!

**NORMA'S HOUSE:** Laura thanked our guild for surpassing our quilt goal of 60, by donating 91!

**NURSING HOME:** Bernadette also thanked our members for reaching our goal and that 10 more have been taken to Shiner Nursing Home towards meeting next year's goal!

Karin presented a letter she received from the Shiner Nursing Home asking if we would consider paying for a monthly birthday party for the residents. Rhonda asked if that is something that we should be supporting if the nursing home is not



# The Quilter's Express November 2025

Official Newsletter of the Shiner Heritage Quilters



a nonprofit organization, also would there be a birthday party if outside parties do not fund it? Discussion followed and Beth said she would research the legal aspects of this as we are a 5013C organization.

**SHOW AND TELL:** Six members showed their beautiful work.

The hostesses than gave away the door prizes.

**PROGRAM:** Darcy and Debbie presented a program on “THE FOLDED LOG CABIN BLOCK”.

Members were given a quilt block kit and watched a short “how to” video. Members tried their hand at machine sewing or hand sewing the logs on a base fabric.

Darcy informed the members of the upcoming programs: December-none and January -M.J. Kinman (Gems and Joy)- online

A five minute break was observed before the business meeting began.

Karin gave her Treasure's Report:

Checking: \$4,954.35

Savings: \$11,234.05      TOTAL: \$16,188.40

Darcy asked for any corrections to the October minutes. Janet Zabransky stated that Carolyn Janak's name was omitted in the list of Hostesses. Corrections were to be made.

Charlene moved that the minutes be approved per correction. Seconded by Wilma. All approved.

Upon further inspection the Hostesses were not mentioned in the minutes only the newsletter, but they will be included in the minutes moving forward.

Debbie read a correspondence from Norma's House thanking our members for all the quilts that we have donated.

## **QUILT SHOW COMMITTEE REPORTS:**

**DONATION QUILT TICKET SALES:** Bennie informed us of the upcoming Market Days: Saturday, Hallettsville, November 15, and Saturday, December 13, at the



# The Quilter's Express November 2025

Official Newsletter of the Shiner Heritage Quilters



Shiner Brewery. She asked the members to please consider joining them at these events with the set up and selling of the chances.

Darcy donated a \$200 Cutting Mat system that was mistakenly sent to her. She had received two as she had only ordered one from the Houston Quilt Show. The vendor told Darcy to donate it to the Guild instead of returning it to her. It will be included in the Raffle baskets for our show.

**ENTRIES:** Darcy reminded everyone that they may start filling out their quilt entry forms and that there are more forms at the Square Quilter. Please bring your completed forms to the January meeting.

**BOUTIQUE:** Kathleen reminded everyone about the 3rd Monday sew day at the Square Quilter. She stated there is a bin of fabric at the store that you may take to use for making Boutique items. She also stated that the December sew day will be cancelled due to Christmas.

**CHRISTMAS DINNER:** Brenda said the plan is to eat at 6:00 p.m. and don't forget the \$20 gift exchange!

**CHRISTMAS BLOCKS:** Margo asked to bring the uncompleted block packets back to the Square Quilter.

Rae Nell spoke to Hope Cummins who informed her that she really misses our Guild. She has attended Temple and Waco guild meetings.

There are no hostesses for the December meeting because of our Christmas Party.

Darcy adjourned the meeting at 7:53 p.m.

Submitted by: Secretary, Debbie Novosad

*Debbie Novosad*



# The Quilter's Express November 2025

Official Newsletter of the Shiner Heritage Quilters



## GUILD SEW DAYS • EVERY THIRD MONDAY

### DECEMBER SEW DAY IS CANCELED.

Until the Quilt Show next March, The Square Quilter is opening its doors just for us every third Monday, from 10:00 am until.... The primary focus is to work on items for the Boutique for the Quilt Show but it's also okay to work on your own personal projects. Bring your own machine and tools.

Here is a list of the remaining third Mondays:

Monday, January 19 • Monday, February 16 • Monday, March 16

## NOVEMBER PROGRAM • FOLDED LOG CABIN

Thanks to Debbie for putting together the kits for our program and bringing a bunch of sewing machines for us to use!

Here are links to the resources listed at the end of the handout:

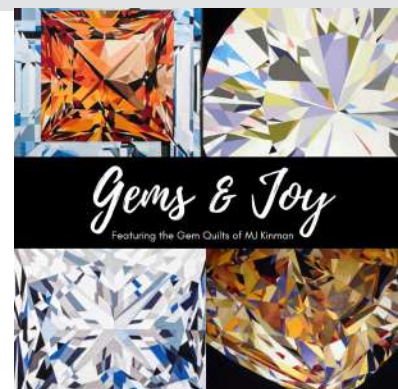
Amy Smart has a great blog post about making traditional Manx blocks: <https://www.diaryofaquilter.com/how-to-piece-a-manx-quilt-block/>

Donna Poster's video: <https://vimeo.com/35897054>

## TUESDAY, JANUARY 6 • MJ KINMAN • TRUNK SHOW - GEMS & JOY

Let's start the New Year with some New Technology! We have rescheduled MJ's lecture for the January meeting, via the internet, using the monitor and sound system in the meeting room.

We are excited to try this as it opens up a lot of opportunity for instructors to "visit" us without needing to travel.





# The Quilter's Express November 2025

Official Newsletter of the Shiner Heritage Quilters



## TUESDAY, FEBRUARY 3 • GREAT BIG SHOW & TELL

Our February program will be dedicated to member Show & Tell. The Quilt Show is just around the corner – show off your latest finishes or last-minute works-in-progress, clever boutique items, family heirlooms or vintage finds.

## TUESDAY, MARCH 3 • QUILT SHOW PREP

We will not have a program in March so we can focus on the Quilt Show.

## FRIDAY, MARCH 20 - SATURDAY, MARCH 21 • 2026 QUILT SHOW

All hands on deck! We have a bigger venue this year, and less time to set up. Wednesday and Thursday will be a whirl as we receive and hang the quilts and help the vendors get situated. We certainly expect that having professionals assemble the pipe-and-drape furniture will make it easier on our (and our husbands') backs, but there will still be a lot to do.

Please review the list of Quilt Show Committee descriptions in the member handbook and think about how you'd like to help. The Committee Chairs will be looking for volunteers! Also think about which committee(s) you might like to chair next time, and use this Show to learn about what to do.

Please direct any general questions to Linda, the Quilt Show Chair. If you have specific questions, use the following list to find out who to ask.

- Publicity..... Irene, Toni
- Donation Quilt..... Rae Nell
- Donation Quilt Ticket Sales ..... Bennie, Rose Mary
- Advertising ..... Rae Nell, Margo
- Docents/Volunteers..... Nola
- Vendors ..... Peggy, Brenda



# The Quilter's Express November 2025

Official Newsletter of the Shiner Heritage Quilters



- Challenge Block ..... Annette, Mary
- Awards..... Gladys, Margo, Marilyn
- Entries ..... Darcy, Charlene, Joyce
- Printed Program ..... Peggy, Darcy
- Boutique..... Kathleen, Bernadette
- Decorations ..... Rae Nell, Margo
- Raffle Baskets ..... Nola, Wilma

**TUESDAY, APRIL 7 (DAYTIME) AND TUESDAY, JUNE 2 (DAYTIME) • LOUANN FISHER • ONE BLOCK WONDER WORKSHOP (PART 1) • \$75**

This is a TWO DAY workshop, but not two CONSECUTIVE days! The first workshop will be the day of our April meeting, and the second workshop will be the day of our June meeting. The \$75 workshop fee includes both days.

You will need to bring SEVEN identical panels of your choice. The panels are NOT included in the workshop fee.

During the first day of the workshop, Louann will explain the process and students will cut the panels and organize the pieces. There may not be time to start sewing, so machines are optional on the first day.





# The Quilter's Express November 2025

Official Newsletter of the Shiner Heritage Quilters



## **TUESDAY, APRIL 7 (MEETING) • LOUANN FISHER • ONE BLOCK WONDER TRUNK SHOW**

Louann Fisher will discuss the One Block Wonder technique and share some of her beautiful quilts.

Louann says, "I have been a quilter for 30 years. I discovered One Block Wonder panel quilts a few years ago, fell in love with the concept, and had to make one. Now I see panels in a whole new way....might it work for a OBW?? I love teaching and guiding others through the process because I get see all their new creations and I don't have to make every one of them myself! Every OBW panel quilt I make teaches me something new and I can't wait to share it with my students."

## **TUESDAY, MAY 5 • SWAP MEET**

Clean out your craft room! Your trash may be someone else's treasure, and you'll have space for all the nifty stuff you'll bring home. Items do not have to be quilting-related. No money changes hands—if you're not willing to give it away, don't bring it. If anything is left and you don't want to take it back home, we will gather it up and donate it to the Shiner Pilot Club Thrift Store.

## **TUESDAY, JUNE 2 (DAYTIME) • LOUANN FISHER • ONE BLOCK WONDER WORKSHOP (PART 2)**

We will have the second day of Louann's workshop during the day before our June meeting. The second day covers composition and assembly. (You have been sewing all those triangles together over the last two months, right?)



# The Quilter's Express November 2025

Official Newsletter of the Shiner Heritage Quilters



**SATURDAY, JULY 18 • MK KINMAN • COLOR THEORY WORKSHOPS • \$50**

**Note: this is NOT our regular meeting day!**



MJ has developed new classes around the research she has been doing in color theory.

This Color Theory workshop includes two segments. In *Lights, Camera, Action!* MJ explains how to apply the rules of color interaction to add sparkle and focal points to a quilt, while *Lit from Within* focuses on creating a dramatic glow with your fabric choices.

We will learn about these color rules and then sew a freezer-paper pieced gemstone block, using the color interaction principles.





## SHOW AND TELL



Lillie



Yolande





## SHOW AND TELL



Bernadette



Mary



Pat, Margo



# The Quilter's Express November 2025

Official Newsletter of the Shiner Heritage Quilters



## ODDS & ENDS

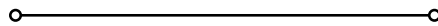
### 2026 Quilt Show Entry Forms

Here are links for the [entry form](#), [instructions](#), and [quilt sleeve handout](#).



Do you have news about upcoming shows, shop hops, or other quilting events?

Forward the info to Darcy at [SHQPrograms@gmail.com](mailto:SHQPrograms@gmail.com).



*The mission of the Shiner Heritage Quilters is to promote the appreciation of quilt making and related needle arts, to offer opportunities to educate members and the community in traditional and contemporary quilting techniques, to preserve the heritage of quilting through interaction with community members, and to provide a supportive, positive atmosphere for the sharing of knowledge and ideas.*

# Shiner Heritage Quilters Show Entry Form

Friday - Saturday, March 20 - 21, 2026

Please complete one entry form per quilt. *This form must be postmarked by February 6th, 2026.*

Mail to: Shiner Heritage Quilters, PO Box 152, Shiner, TX 77984

Name: \_\_\_\_\_

Title of entry or  
pattern name: \_\_\_\_\_

E-mail: \_\_\_\_\_ Phone: \_\_\_\_\_

Size (in inches)                      Length: \_\_\_\_\_ Width: \_\_\_\_\_

Category (choose one of the following five categories)

*The Large Quilt category includes bed-sized quilts from twin to king, and large throws or wall quilts  
at least 80 inches in either dimension (length or width)*

\_\_\_ **Large, Machine Quilted**

\_\_\_ **Large, Hand Quilted**

*The Small Quilt category includes crib or baby quilts, and small throws or wall quilts  
less than 80 inches in both dimensions (length and width)*

\_\_\_ **Small, Machine Quilted**

\_\_\_ **Small, Hand Quilted**

*The Youth Quilt category includes quilts of any size made by a person aged 17 or younger*

\_\_\_ **Youth Quilt (any size)**

Pieced by: \_\_\_\_\_ Quilted by: \_\_\_\_\_

Name of person authorized  
to pick up the quilt after the show: \_\_\_\_\_

If you have multiple entries, please indicate your priority preference for **this** entry. (Entries will be accepted as space allows.)

\_\_\_ 1st choice \_\_\_ 2nd choice \_\_\_ 3rd choice \_\_\_ 4th choice

Quilt Story \_\_\_\_\_

\_\_\_\_\_

\_\_\_\_\_

\_\_\_\_\_

## **IMPORTANT: HOLD HARMLESS AGREEMENT**

I agree to release the Shiner Heritage Quilters and the Shiner KC Hall from all liability for any loss, damage, or theft of any article entered by me in the Shiner Heritage Quilters Show 2026. I give permission for photographs of my entry to be published in area newspapers and on the Shiner Heritage Quilters' website and social media.

Signature \_\_\_\_\_ Date \_\_\_\_\_

# Quilt Entry Instructions – Shiner Heritage Quilters Show

## Friday and Saturday March 20 & 21, 2026

You are invited to submit entries for the 2026 quilt show. Complete one entry form for each item you wish to enter. **Entry forms must be postmarked by Friday, February 6, 2026.**

Limit 4 entries per person. The entries will be accepted as display space allows. If you have multiple entries, you are asked to prioritize your entries on each entry form. Quilts that were exhibited in previous Shiner quilt shows are not eligible for the 2026 show.

The 2026 Shiner Heritage Quilters Show categories open to the public are:

- **Large Quilts Machine Quilted:** Bed sized quilts from twin to king size and large throws.
- **Large Quilts Hand Quilted:** Bed sized quilts from twin to king size and large throws.
- **Small Quilts Machine Quilted:** Baby quilts and small throws.
- **Small Quilts Hand Quilted:** Baby quilts and small throws.
- **Youth Quilts:** age 17 and under, any size.

All quilt entries must be clean and constructed of fabric. Quilts may be machine quilted, hand quilted or tied. All quilts must be bound or otherwise finished. Quilts wider than 90" may have to be gathered slightly to fit the quilt poles. Wall hangings, table runners, etc. are acceptable—use the longest dimension to determine the size category. Quilts with one or both dimensions 80" or longer are considered Large. Quilts with both dimensions less than 80" are considered Small. The Guild may reclassify odd-sized items at our discretion.

**SLEEVES:** All quilts larger than 30" wide will need sleeves. *For quilts longer than 92", attach the top of the sleeve 90" from the bottom edge of the quilt.* Please see the instruction sheet for directions for making sleeves for hanging quilts.

**IDENTIFICATION:** Make two matching fabric labels including your name, address, phone number **and the name of the quilt** as it appears on your entry form. Sew or baste one label to the bottom of the back of your quilt. Each quilt should be placed in a separate pillowcase or cloth bag. Attach the second matching label to this bag. Having the name of the quilt on the outside of the bag will help speed things along and identify your quilt easily.

**DELIVERY OF ENTRIES:** Deliver your entries to the **Shiner KC Hall, 102 S Ave G**, Shiner (two blocks south of Hwy 90A at 1st Street) on **Wednesday, March 18, 2026, from 10:30 am to 6:30 pm**. If you need to deliver at another time, please call Darcy Curtin at (832) 805-5222 to make special arrangements.

For your protection, you will receive a CLAIM CHECK for each entry at the time of check in. You will need this CLAIM CHECK to pick up each of your entries on Saturday after the show.

**RETURN OF ENTRIES:** No entry may be removed before the closing of the show. All entries can be picked up after the show has closed on Saturday March 21, 2026, between 4:00 pm and 6:00 pm. The person picking up the entry **MUST** have the claim check given on Wednesday. If someone other than the owner is picking up the item, his or her name must be on the claim check.

**QUILT STORY:** Please take the time to write the story of your quilt. Why was it made? Who was the quilt for? Is the quilt your original design or did you use a pattern or kit? Include any prizes the quilt has won and information of historical or sentimental significance. The story should be 50 words or less. We reserve the right to edit for clarity and length if necessary.

**ENTRIES FOR SALE:** Your entry may be identified for sale, but the Guild will not be involved directly in the sale of any entry.

# Quilt Sleeve Instructions

## How to sew a sleeve on the back of your quilt after binding

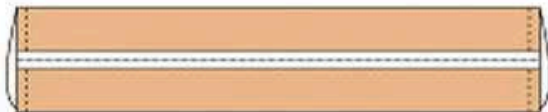
Sewing a sleeve on the back of your quilt makes it easy to hang the quilt for display at home or in a quilt show. The quilt sleeve can be permanent or temporary and it can be sewn on after or at the same time you apply the binding.

### Sew on a Sleeve after Binding the Quilt:

1. Cut or piece together a piece of fabric to make a strip 9" tall and the same width as your quilt.
2. Fold under short edges  $\frac{1}{4}$ " twice, toward the wrong side of the fabric to make a hem. Press, and sew a straight or zigzag seam to hem the sleeve.
3. Now, with the strip lengthwise, wrong sides together, align the raw edges and sew together with a  $\frac{1}{2}$ " seam allowance. Press the seam allowance open.
4. Place the open seam allowance against the quilt's back. Center and pin the top edge of the tube to the back of the quilt, about  $\frac{1}{2}$ " below the binding.
5. Use a whipstitch to sew the top edge of the tube to the quilt backing. Stitch into the batting occasionally to help strengthen the seam.
6. Smooth the sleeve downward along the quilt back, and then make a  $\frac{1}{2}$ " fold along its length to create a pleat. Leaving the pleat intact, pin the sleeve bottom to the quilt.
7. Whipstitch the lower edge of the sleeve to the quilt. Remove pins. The sleeve will pooch out a bit to allow space for the hanging rod.
8. Whipstitch the back edges of the sleeve to the quilt. Leave the front edges unsewn to allow for rod insertion.



Fold sides and sew.



Sew lengthwise, wrong sides together. Press seam open.



After sewing to quilt, sleeve will pooch out to allow space for rod.